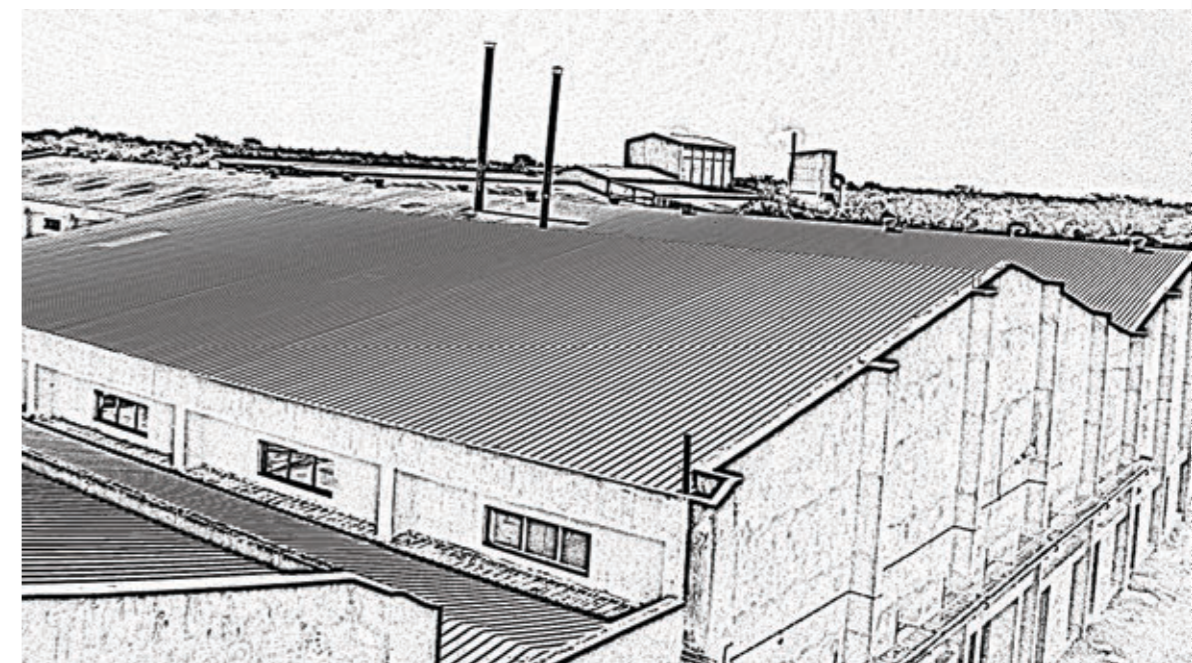
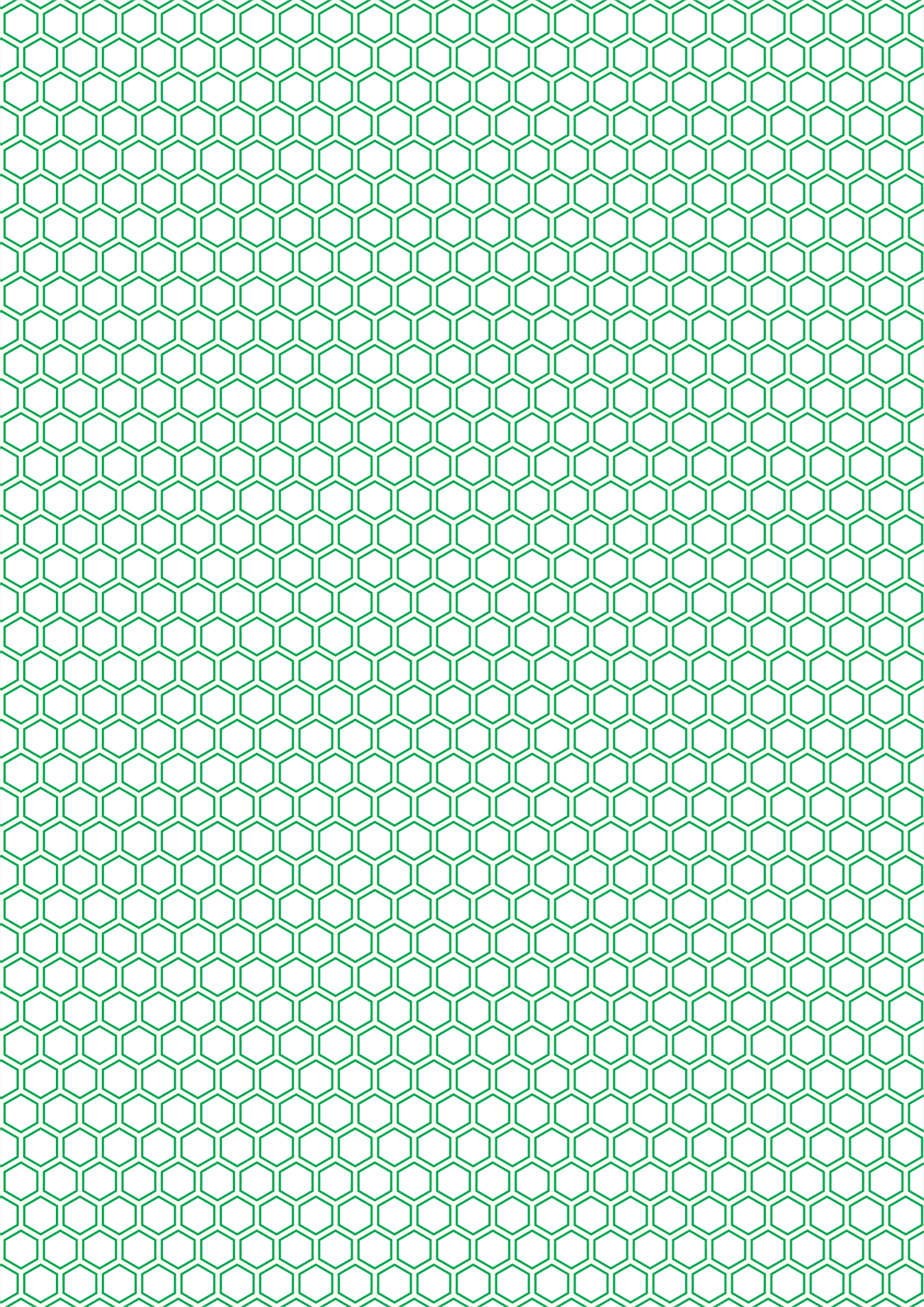




VENETO[®]
MOSAIC

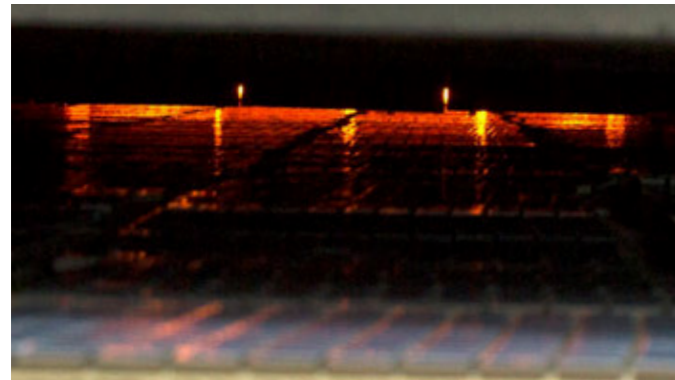
Brand Profile



Manufacturing Plant at Kaiyal - Mehsana, Gujarat, INDIA.

VENETO[®]
MOSAIC

■ "VENETO" Recycled Mosaic is



Manufactured using recycled glass through Sintered Technology and meets the specification as per International Standards.

Carrying inventory of more than 400+ SKUs.



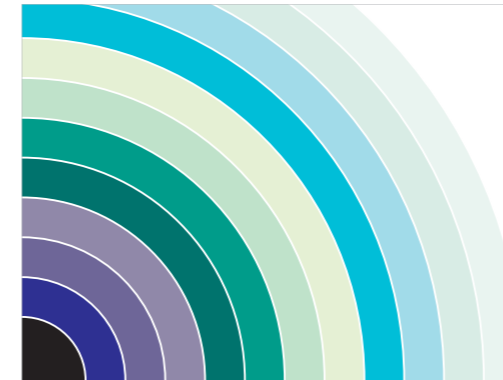
Assembled with Robotic Technology.

Present PAN India with 1000+ Dealers & Marketing Staff.



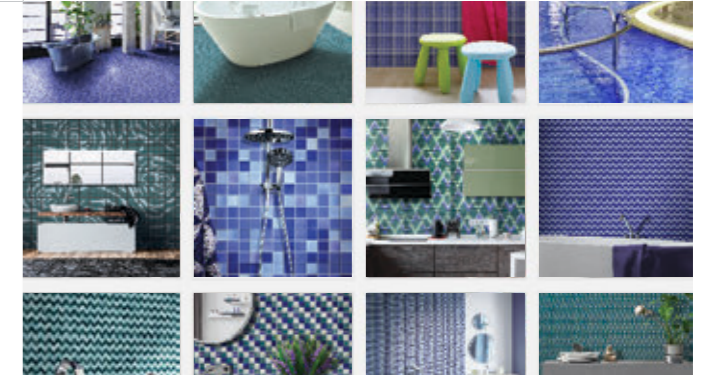
Marketed globally 50+ Countries.

■ "VENETO" Provides



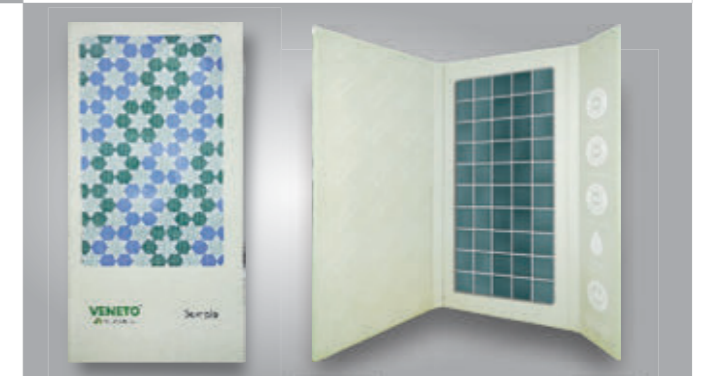
Wide mosaic range consisting of 5 Sizes having 80+ Colours.

Help in Visualisation/selection from our Application Images/Designs Library.



Design Presentations, on request, using our exclusive software for computerised simulation.

Samples, on request.



C4	D4	E4	F4	G4	H4	I4	J4	K4	L4	M4	N4	O4	P4	Q4
C5	D5	E5	F5	G5	H5	I5	J5	K5	L5	M5	N5	O5	P5	Q5
C6	D6	E6	F6	G6	H6	I6	J6	K6	L6	M6	N6	O6	P6	Q6
C7	D7	E7	F7	G7	H7	I7	J7	K7	L7	M7	N7	O7	P7	Q7
C8	D8	E8	F8	G8	H8	I8	J8	K8	L8	M8	N8	O8	P8	Q8
C9	D9	E9	F9	G9	H9	I9	J9	K9	L9	M9	N9	O9	P9	Q9
C10	D10	E10	F10	G10	H10	I10	J10	K10	L10	M10	N10	O10	P10	Q10
C11	D11	E11	F11	G11	H11	I11	J11	K11	L11	M11	N11	O11	P11	Q11
C12	D12	E12	F12	G12	H12	I12	J12	K12	L12	M12	N12	O12	P12	Q12
C13	D13	E13	F13	G13	H13	I13	J13	K13	L13	M13	N13	O13	P13	Q13
C14	D14	E14	F14	G14	H14	I14	J14	K14	L14	M14	N14	O14	P14	Q14

Installation Plan, wherever required to enable proper execution of design.

VENETO RECYCLED MOSAIC

Recycled Mosaic
100% made with recycled glass

5 Sizes in 3 Shapes
2 Squares, 1 Rectangle and 2 Hexas

2 Modular sizes
**possible to mix & merge sizes, items
and techniques retaining alignment.**

3 Production techniques
aligned, classic & modular
infinite pattern possibilities.

7 Looks
enriches design feel.

Wide colour range
enhances design aesthetics.

Innovative assembling
enables better intactness.



The Group

“ITALIA Group” with more than **30 years of experience** in manufacturing and marketing world-class products believes in excelling in all its endeavours.

With a **dedicated manpower of over 750 personnel**, ITALIA Group produces and sells ceramic tiles, glass mosaics, porcelain mosaics and recycled mosaics under the eminent brand names of GRIFINE, ITALIA, PALLADIO, PICCOLO & VENETO respectively.

Promoted by the Poddar Family, the Corporate management of the group comprises of several members of the family supported by many senior professionals dedicated to their specialised field of operation.

The vision of the group is to “**Beautify the Surfaces**” with its wide range of cladding products.

Operating since
1987

750+
Employees

4
Mfg.
facilities

The Company

Through a focussed strategy, an intrinsic passion for creativity in the field of mosaics and with the continuous involvement and long-term association with Italian technocrats, specifiers and channel partners, “**Piccolo Mosaic Limited**” has put up a state-of-the-art mosaic plants in Gujarat, India, to manufacture Porcelain Mosaics, Glass Mosaics & Recycled Mosaics.

Our plant is ISO certified and adheres to the Environment Management Standards, Occupational Health and Safety Standards and Quality Management Standards. We are also a member of the Indian Green Building Council and the US Green Building Council. It is our endeavour to support the green building movement.

3
Mfg.
facilities

Present in
50+
countries

ISO
Certified
company

8
Marketing
offices

Pan India
1000+
dealers

Green
building
member





Possibilities
Unlimited...

The Brand

VENETO mosaic brings to the market 'Recycled mosaic' which is made with post consumer glass. VENETO mosaic adds liveliness to the ambience through their looks, form and feel of the product.

The fact that it is made from post consumer glass is a statement of our commitment towards doing our bit for preserving the environment so that the coming generations can enjoy this earth in the same way as we have been able to do.

VENETO mosaic range having 5 sizes, 7 looks, 80+ colours create infinite design possibilities to explore and make you experience the wonderful world of mosaic.

5 Sizes	7 Looks	80+ Colours
-------------------	-------------------	-----------------------

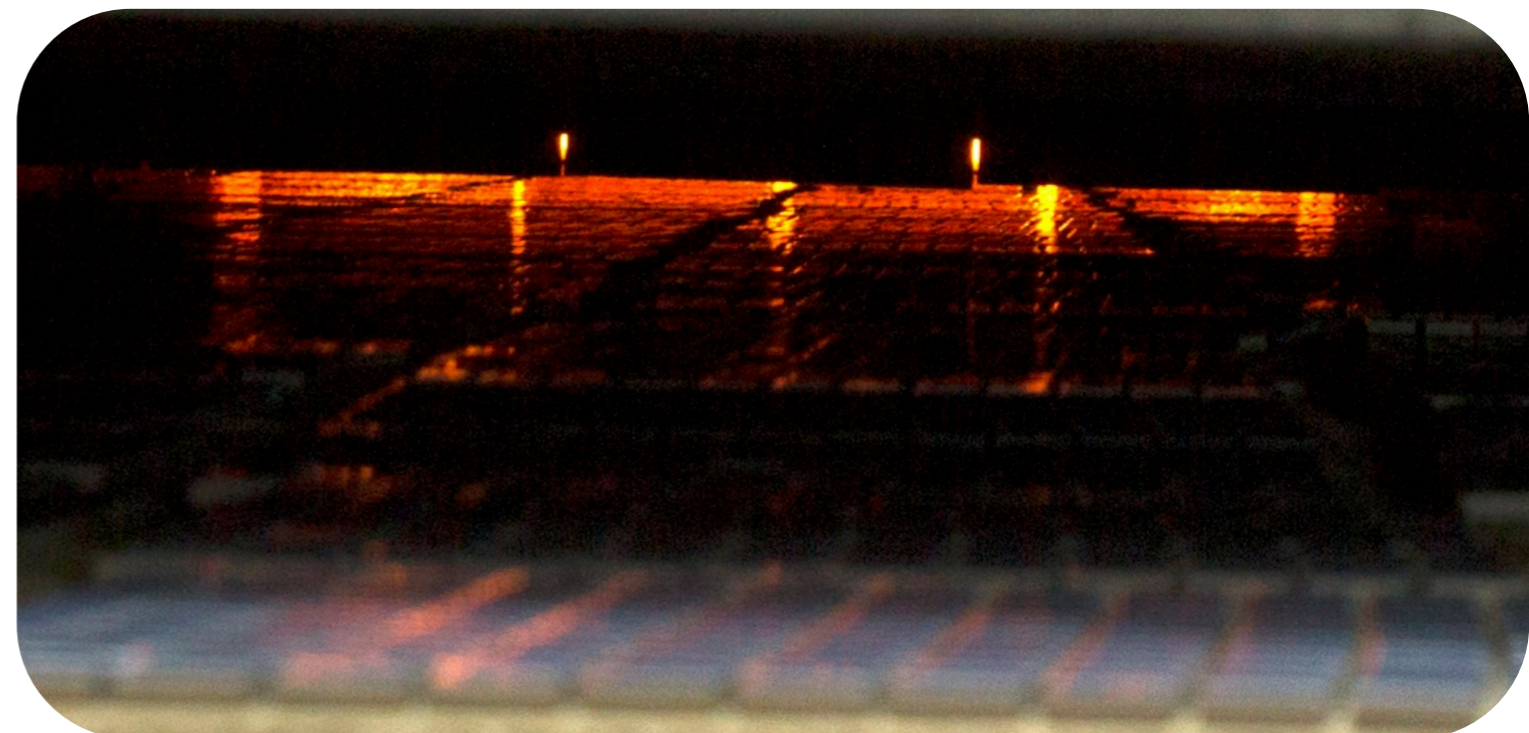
Manufacturing Plant

VENETO recycled mosaic is manufactured at Kaiyal (50 kms north of Ahmedabad city), Gujarat, India. The mosaic production is carried out using state-of-the-art current generation European knowhow, plants and machineries.

The mosaics are produced using post consumer glass through Sintered Technology Our production standard complies the specification as per International Standards, applicable to impervious glass mosaic.

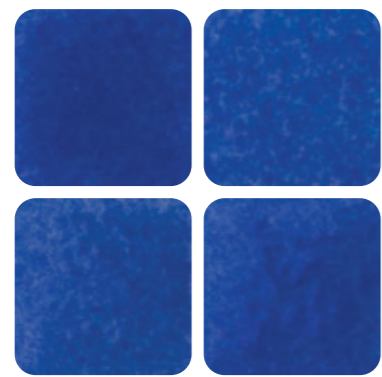
Made in
INDIA
with latest
european
knowhow

Mfg.
as per
**international
standard**

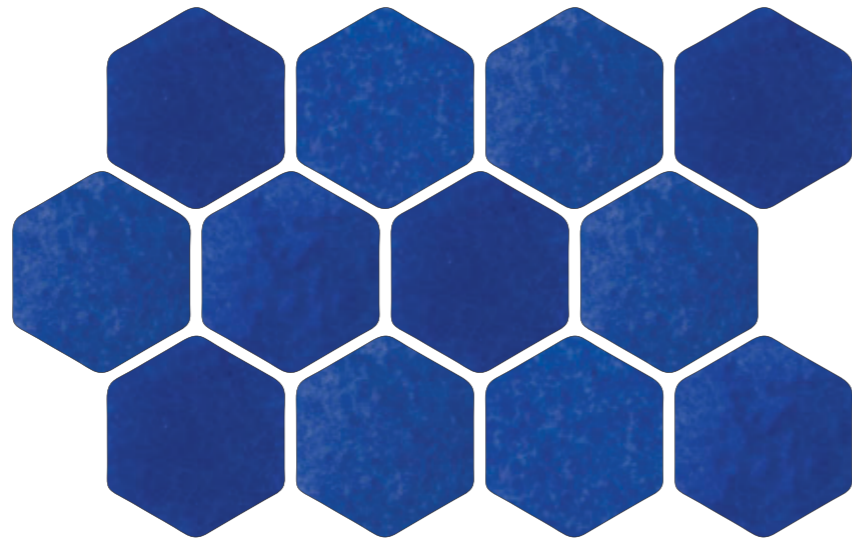


Colours

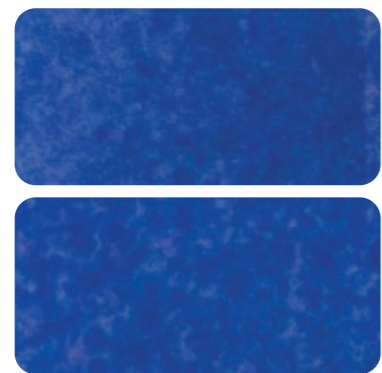
80+
colours



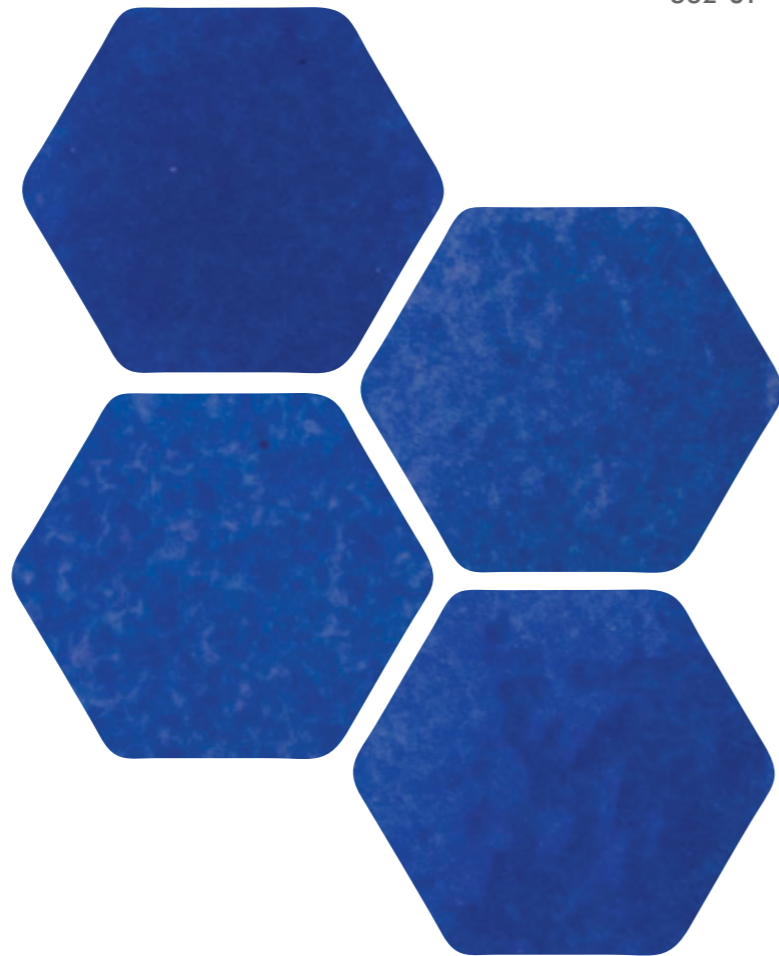
532-ST³



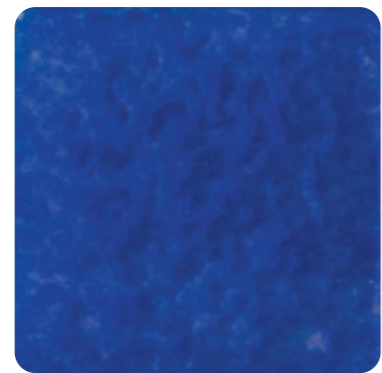
532-ST³



532-ST³

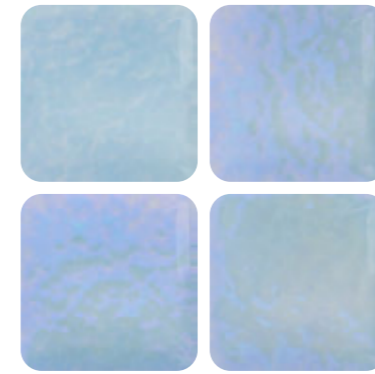


532-ST³

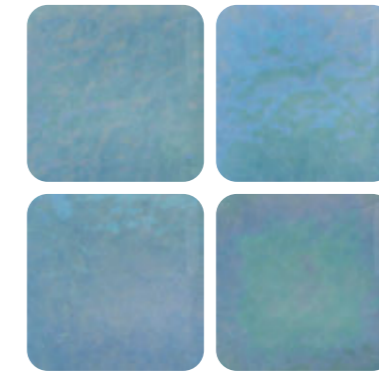


532-ST³

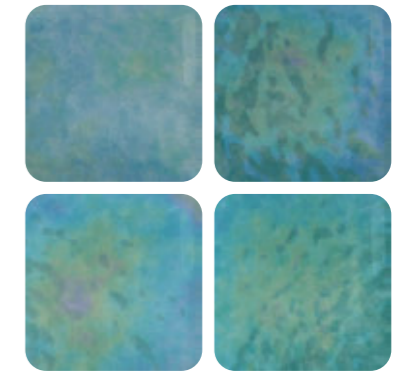
Jazzy Rainbow effect



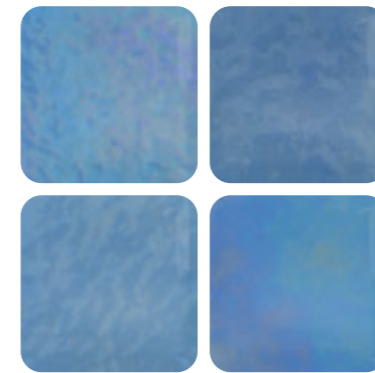
1521-JZ¹



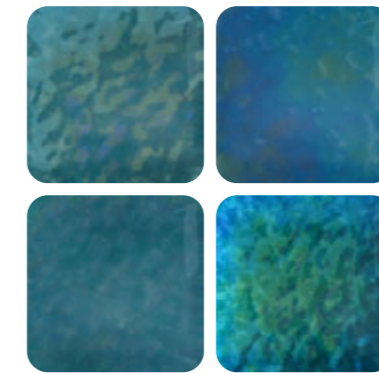
1566-JZ¹



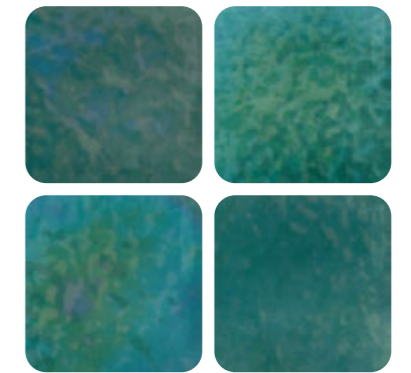
1561-JZ¹



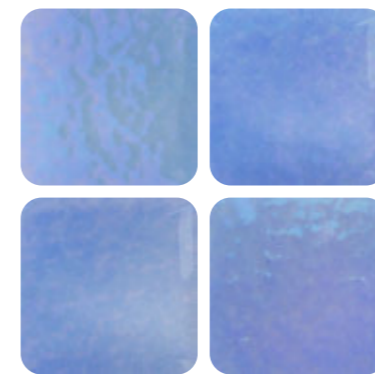
1525-JZ³



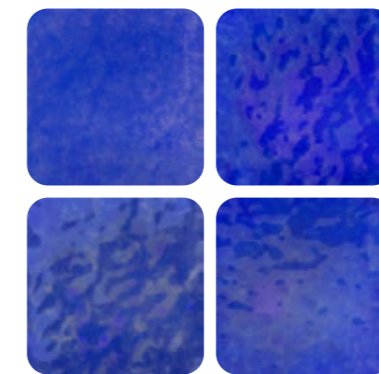
1569-JZ³



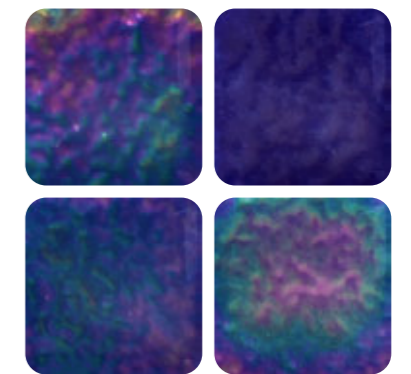
1564-JZ³



1528-JZ¹



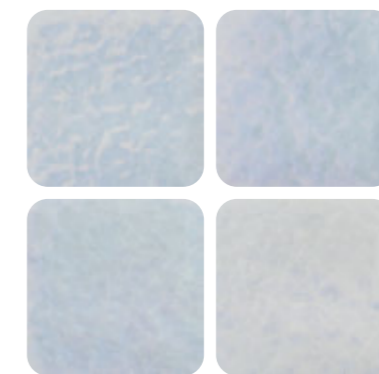
1532-JZ³



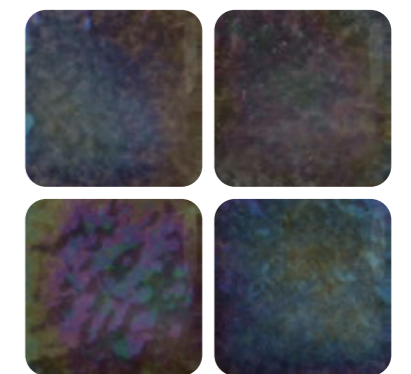
1539-JZ³



1501-JZ¹

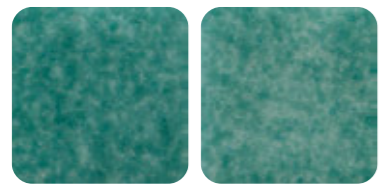


1503-JZ¹



1520-JZ⁴

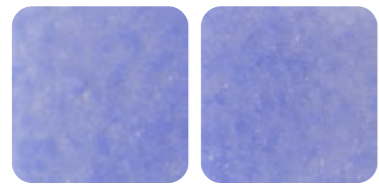
Brake Grip effect



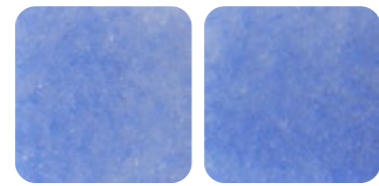
4562-BK²



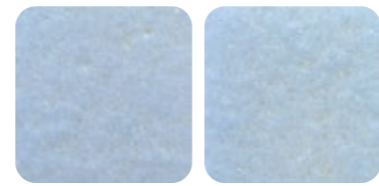
4567-BK²



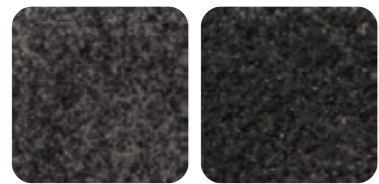
4537-BK²



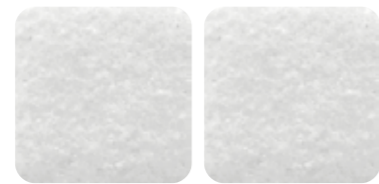
4530-BK²



4523-BK²



4520-BK⁴



4503-BK¹

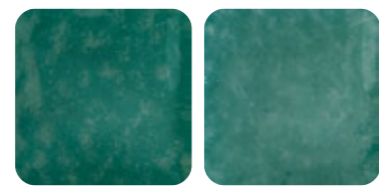


4501-BK¹

Steam Mist effect



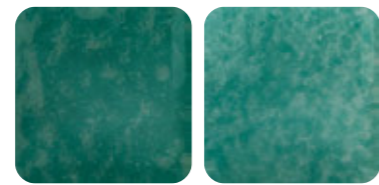
564-ST³



562-ST²



561-ST¹



569-ST³



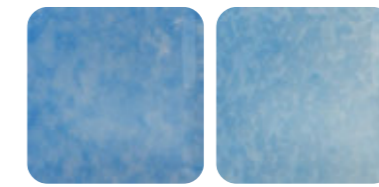
567-ST²



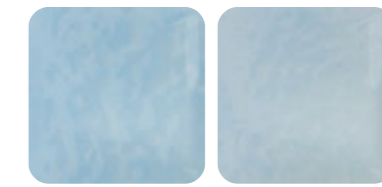
566-ST¹



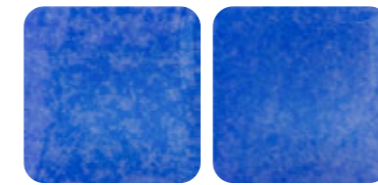
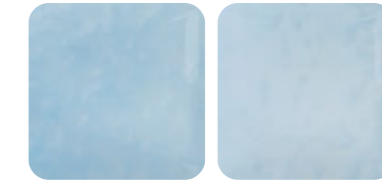
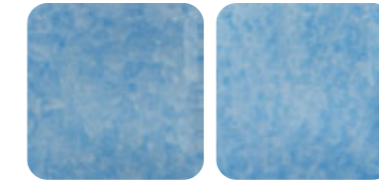
525-ST³



523-ST²



521-ST¹



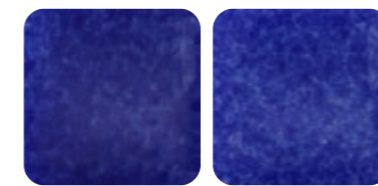
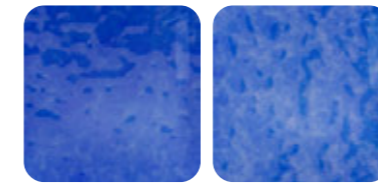
532-ST³



530-ST²



528-ST¹



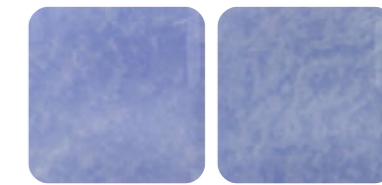
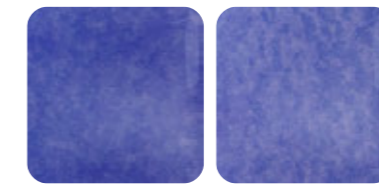
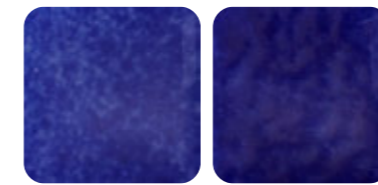
539-ST³



537-ST²



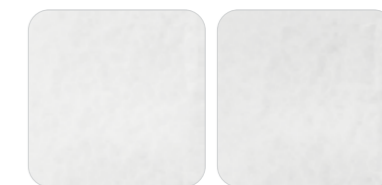
535-ST¹



520-ST⁴



503-ST¹



501-ST¹



Oxido Metallic effect



2362-OD²



2367-OD²



2323-OD²



2330-OD²



2337-OD²



2301-OD¹



2303-OD¹



2320-OD⁴

Gems Gloss effect



361-GM¹



362-GM²



364-GM³



366-GM¹



367-GM²



369-GM³



321-GM¹



323-GM²



325-GM³



328-GM¹



330-GM²



332-GM³



335-GM¹



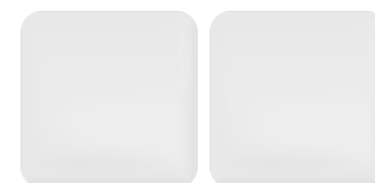
337-GM²



339-GM³



301-GM¹



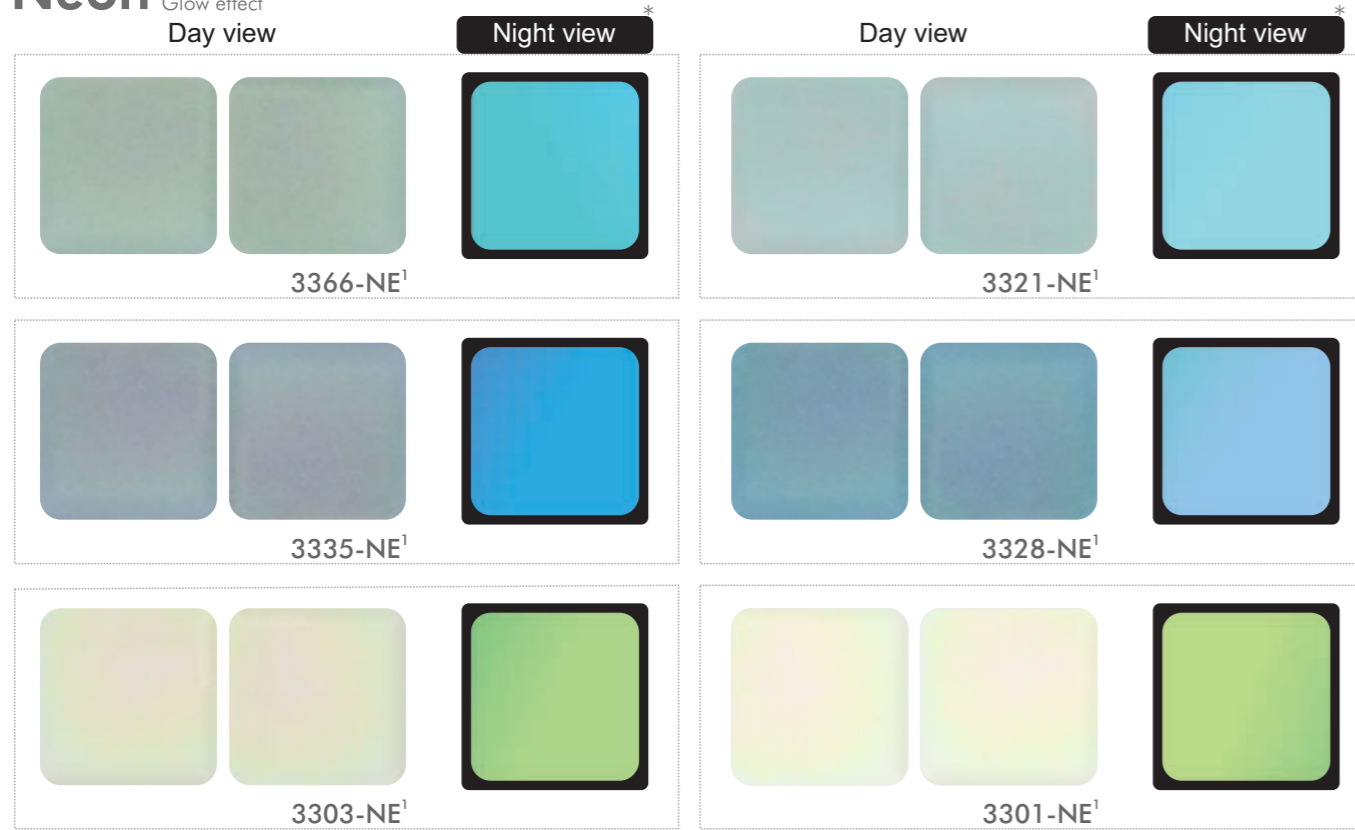
303-GM¹



320-GM⁴

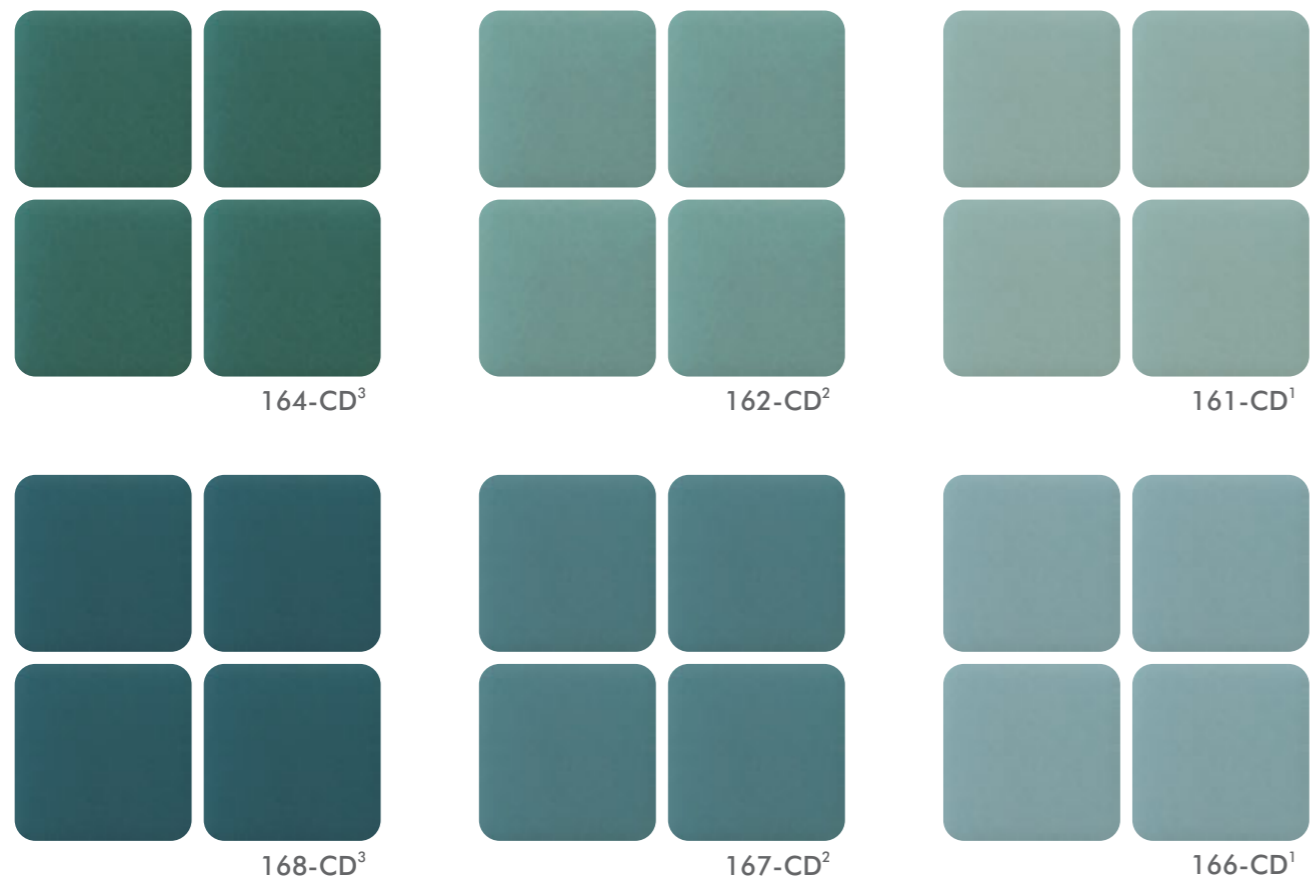


Neon Glow effect
Day view



* Colours shown here are indicative and are subject to printing limitation.

Candy Matt effect



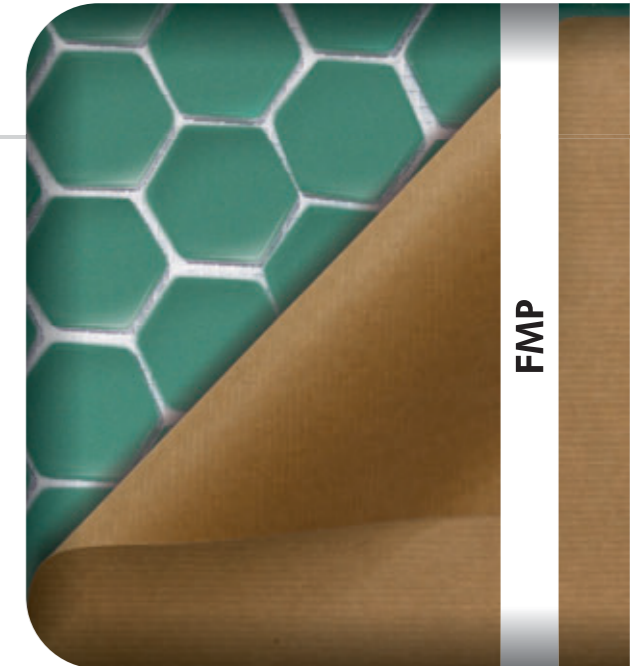
Assembled through Latest Linking Technology

Assembling

“Papered”

FMP (Face Mounted on Paper)

Papering is the conventional method used for assembling of mosaics. Under this method paper is glued on the face of mosaic (FMP). This is one of the universal ways of assembling mosaics into sheet.



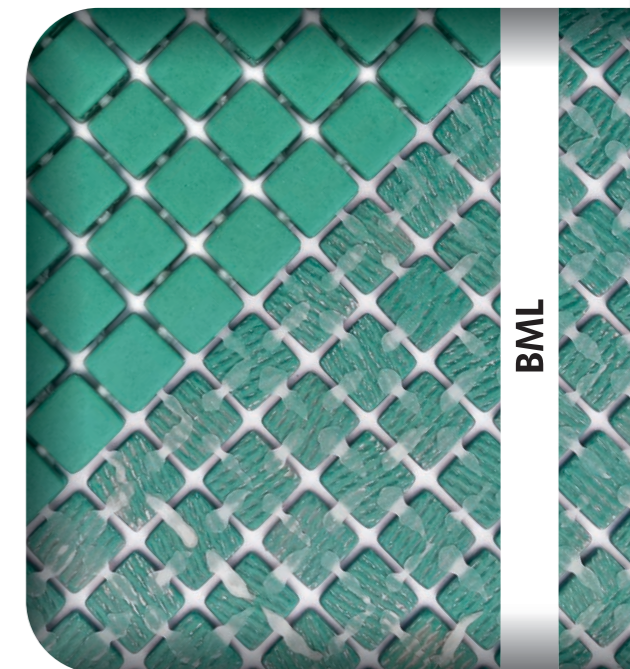
“LinkTec”

BML (Back Mounted on Link)

‘LinkTec’ is the state-of-the-art innovative technology for assembling of mosaics through Robot. Under this method polyurethane links are created at the back of the mosaics (BML) for assembling them into sheet.

Advantages of “LinkTec” :

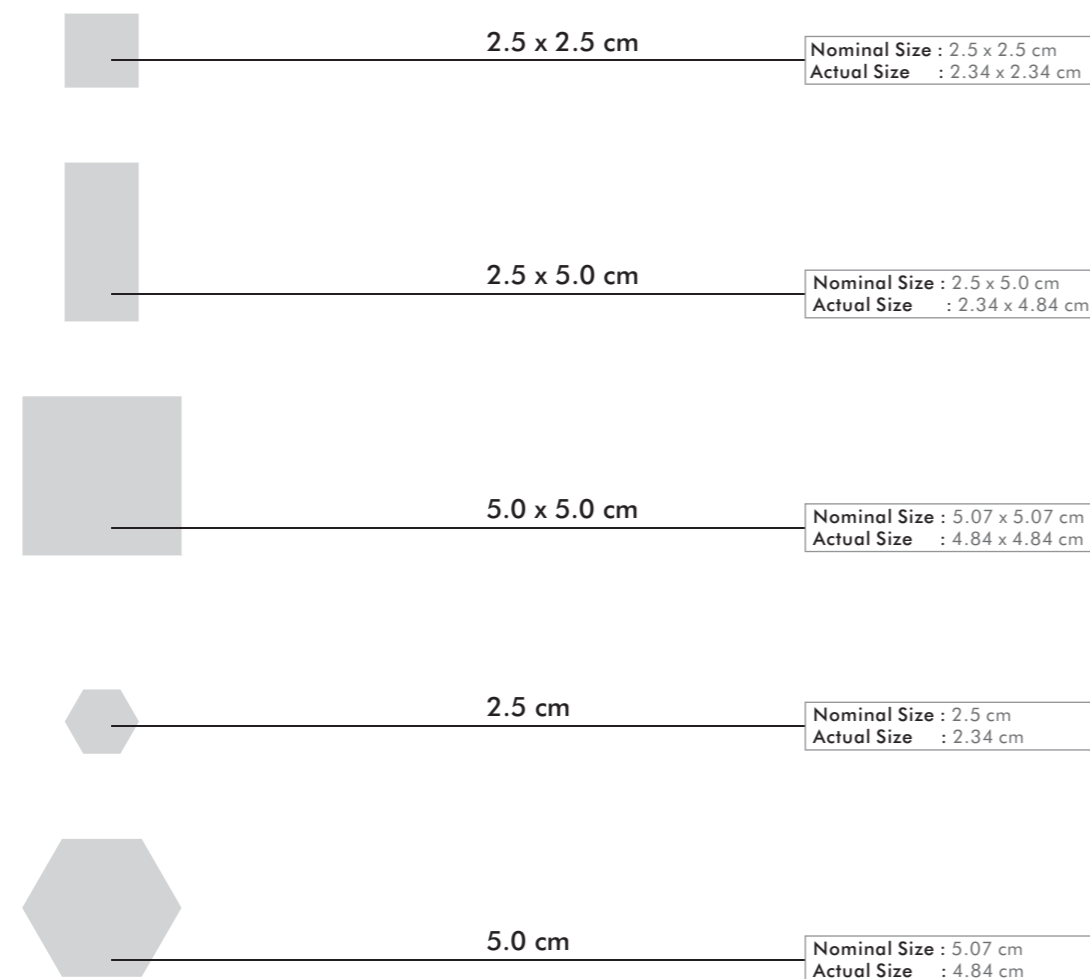
- Water Resistant
- Weather Resistant
- Enables better intactness
- Easy and Faster installation
- Excellent finishing



Formats

Mosaic Size

VENETO is available in 5 different formats - 2 squares, 1 rectangle and 2 hexas.



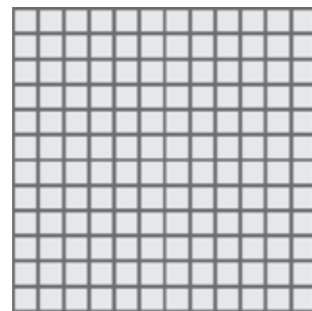
Mosaic Nominal Size = Actual Size + Joint Gap

Techniques

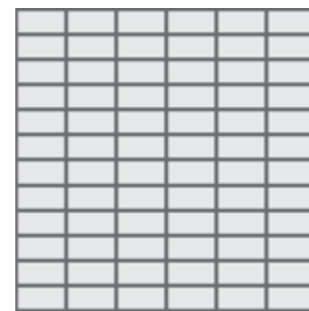
Aligned

An arrangement of "unsize" mosaics in a regular grid layout, wherein the mosaic placement is parallel & perpendicular to each other with the specified joint gap.

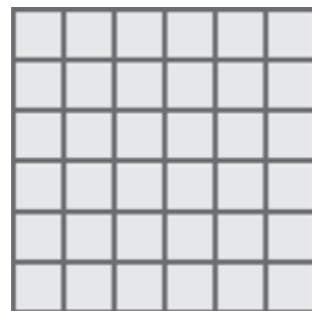
The Aligned technique assumes a "grid placement" of unsize mosaics, where look/s and colour/s change as per the design need but mosaic size remains the same.



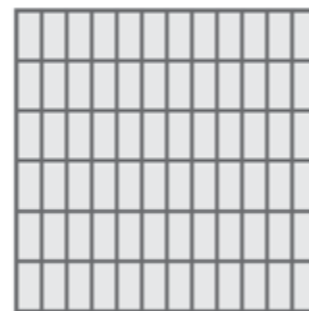
2.5 x 2.5 cm



2.5 x 5 cm



5 x 5 cm

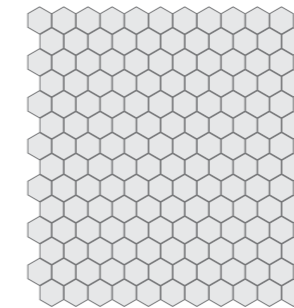


2.5 x 5 cm

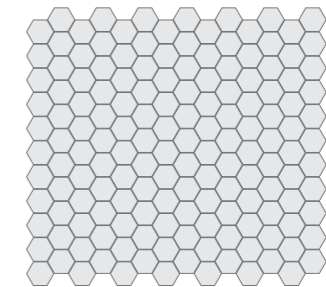
Classic

An arrangement of "unsize" mosaic not in a regular grid layout, wherein the mosaic placement is distinct. In classic technique unsize mosaics are assembled in a pattern which has a common specified joint gap.

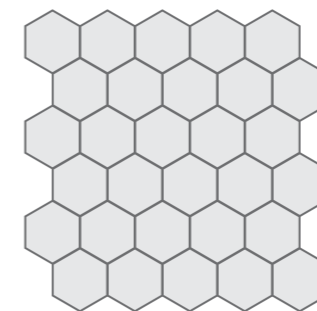
The Classic technique assumes a "fixed placement" of unsize mosaics, where look/s and colour/s change as per the design need but mosaic size remains the same. Such unique placement of mosaic is called "pattern".



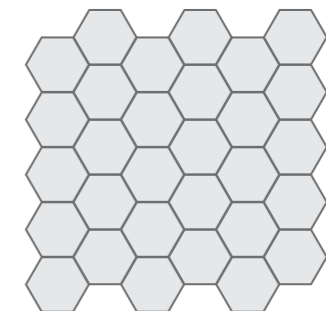
2.5 cm Hexa



2.5 cm Hexa



5 cm Hexa



5 cm Hexa

Classic

An arrangement of "unysize" mosaic not in a regular grid layout, wherein the mosaic placement is distinct. In classic technique unysize mosaics are assembled in a pattern which has a common specified joint gap.

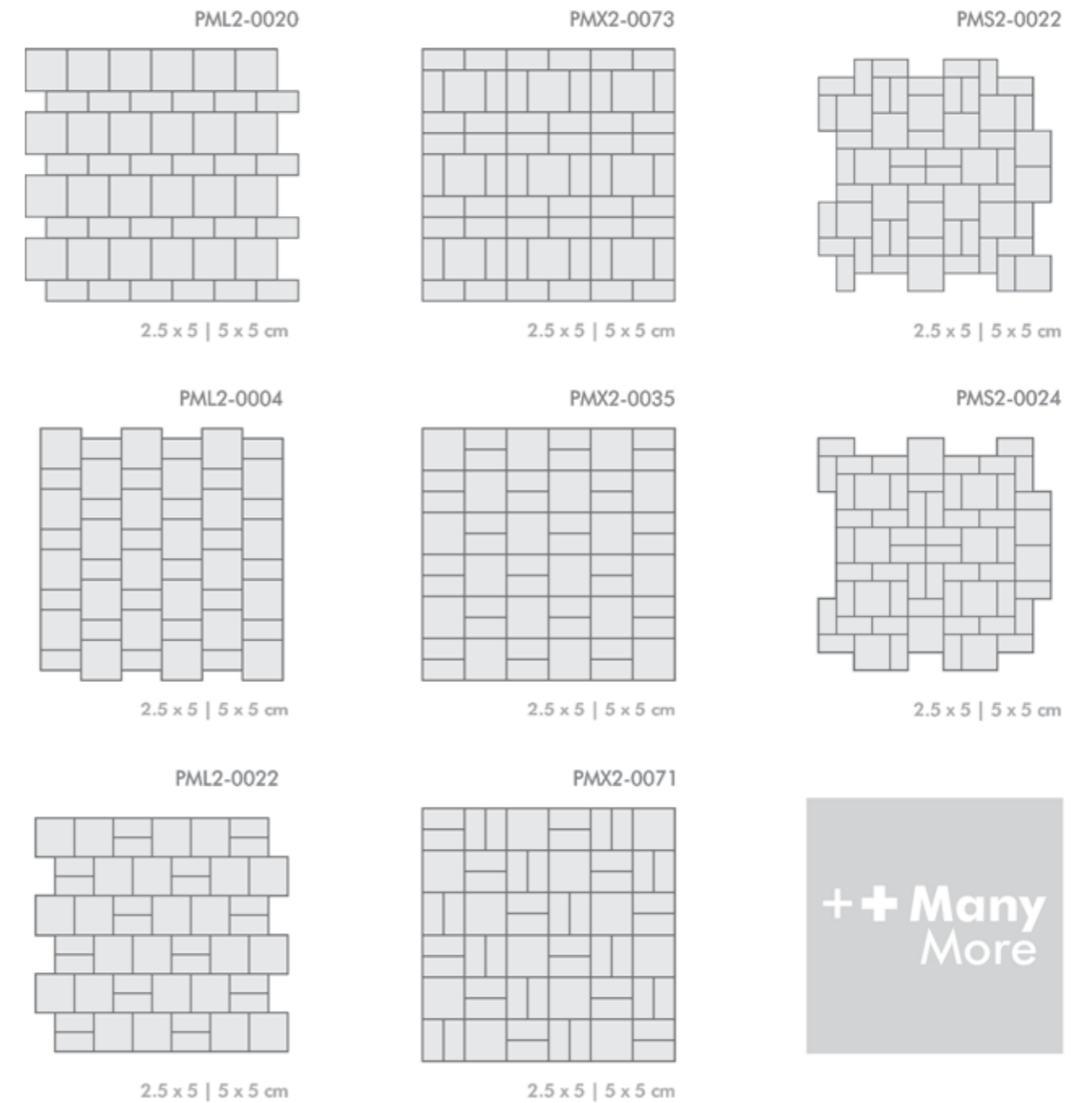
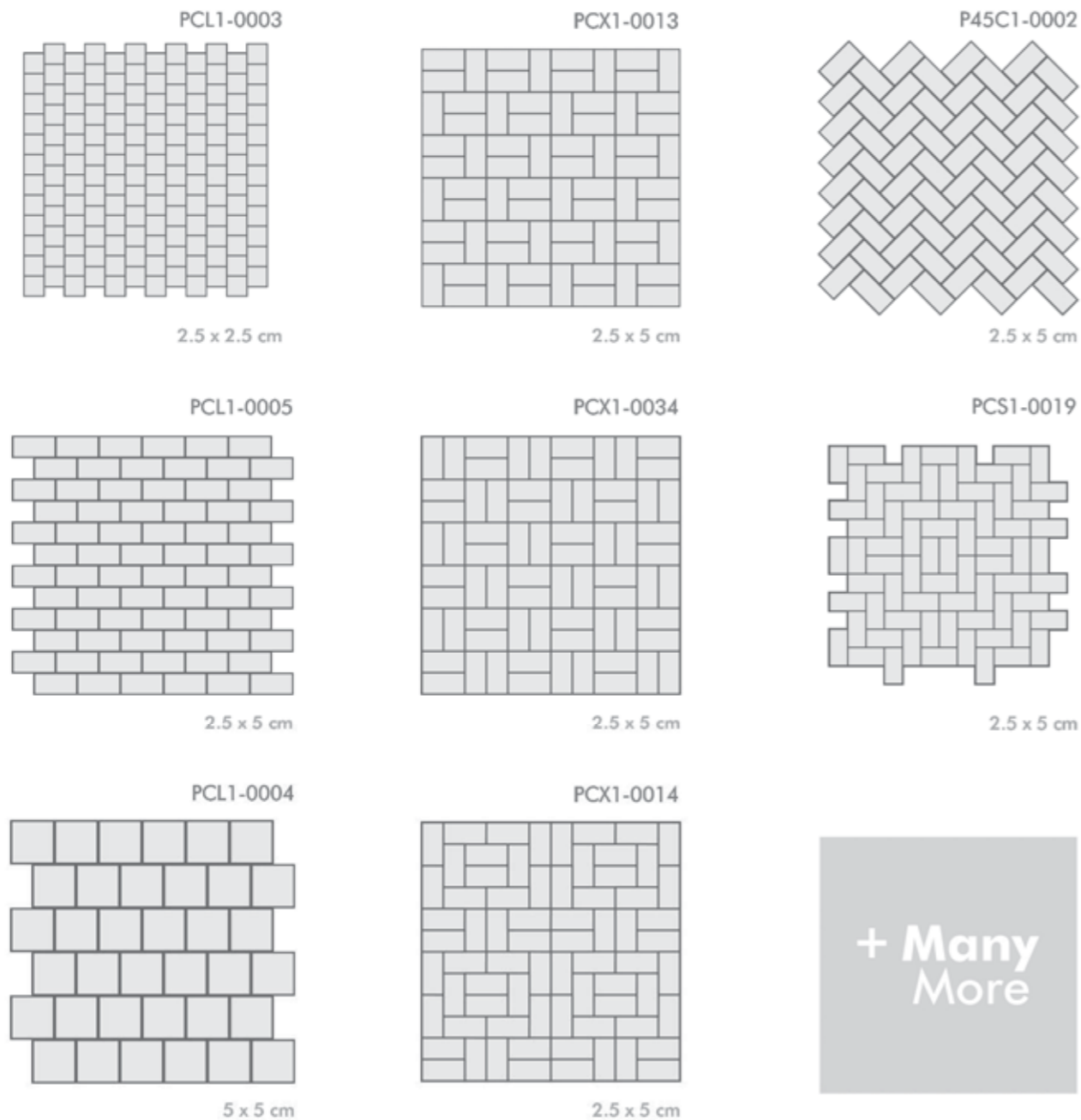
The Classic technique assumes a "fixed placement" of unysize mosaics, where look/s and colour/s change as per the design need but mosaic size remains the same. Such unique placement of mosaic is called "pattern".

Modular

An arrangement of "multisizes" of mosaic not in a regular grid layout, wherein the mosaic placement is distinct. In modular technique multisize mosaics are assembled together in a pattern with a common specified joint gap.

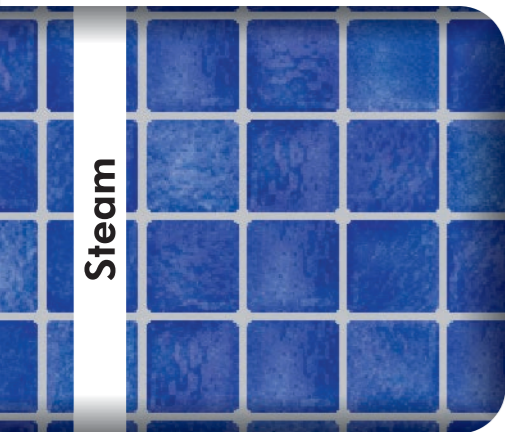
Modular technique assumes a "fixed placement" of multisize mosaics, where look/s and colour/s change as per the design need but mosaic sizes remain the same. Such unique placement of mosaic is called "pattern".

Under this technique possibilities of creating patterns are "limited to one's own imagination".



7 Looks

with 88 colours



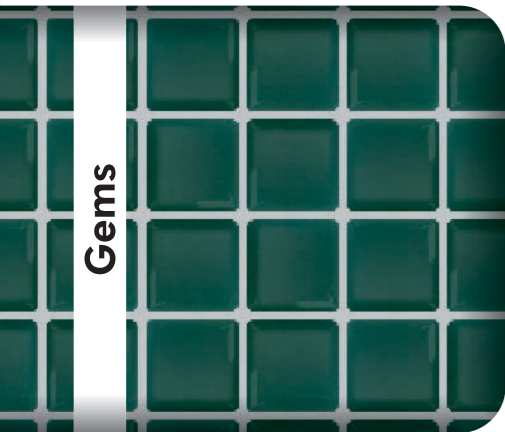
Steam

Steam

Mist effect

Steam is available in 2.5 x 2.5 | 5.0 x 5.0 cm; 2.5 x 5.0 cm, and 2.5 | 5.0 cm Hexa formats consisting of :-

- ST¹ 07 Colours
 - ST² 05 Colours
 - ST³ 05 Colours
 - ST⁴ 01 Colours
- } 18 Colours



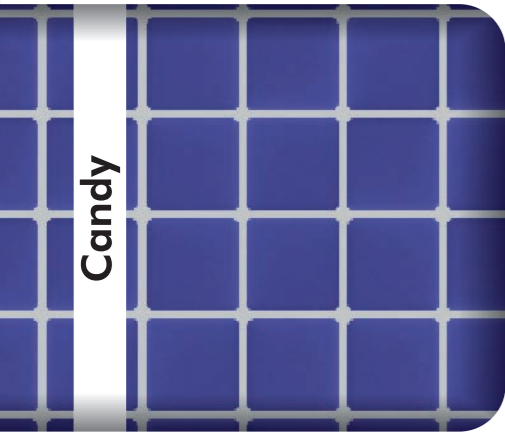
Gems

Gems

Gloss effect

Gems is available in 2.5 x 2.5 | 5.0 x 5.0 cm; 2.5 x 5.0 cm, and 2.5 | 5.0 cm Hexa formats consisting of :-

- GM¹ 07 Colours
 - GM² 05 Colours
 - GM³ 05 Colours
 - GM⁴ 01 Colours
- } 18 Colours



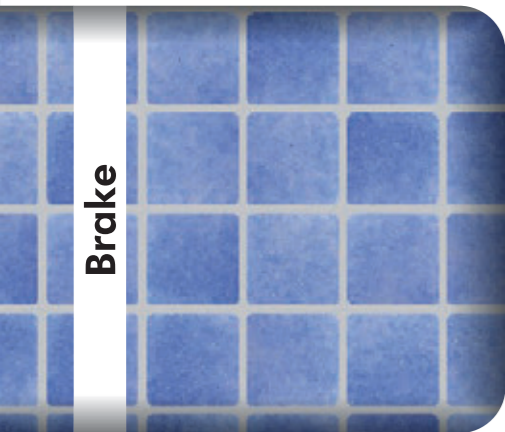
Candy

Candy

Matt effect

Candy is available in 2.5 x 2.5 | 5.0 x 5.0 cm; 2.5 x 5.0 cm, and 2.5 | 5.0 cm Hexa formats consisting of :-

- CD¹ 07 Colours
 - CD² 05 Colours
 - CD³ 05 Colours
 - CD⁴ 01 Colours
- } 18 Colours



Brake

Brake

Grip effect

Brake is available in 2.5 x 2.5 | 5.0 x 5.0 cm; 2.5 x 5.0 cm, and 2.5 | 5.0 cm Hexa formats consisting of :-

- BK¹ 02 Colours
 - BK² 05 Colours
 - BK³ 00 Colours
 - BK⁴ 01 Colours
- } 8 Colours

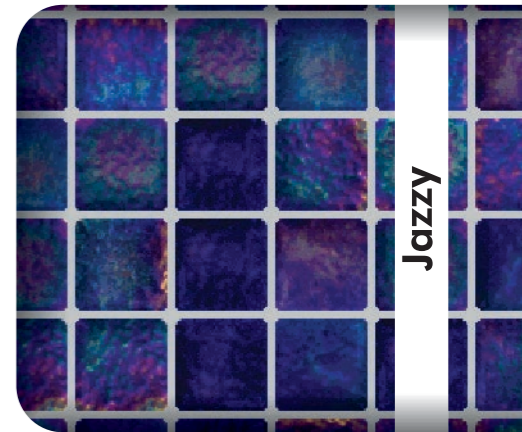
Multi Looks To Explore

Jazzy

Rainbow effect

Jazzy is available in 2.5 x 2.5 | 5.0 x 5.0 cm; 2.5 x 5.0 cm, and 2.5 | 5.0 cm Hexa formats consisting of :-

- JZ¹ 06 Colours
 - JZ² 00 Colours
 - JZ³ 05 Colours
 - JZ⁴ 01 Colours
- } 12 Colours



Jazzy

Oxido

Metallic effect

Oxido is available in 2.5 x 2.5 | 5.0 x 5.0 cm; 2.5 x 5.0 cm, and 2.5 | 5.0 cm Hexa formats consisting of :-

- OD¹ 02 Colours
 - OD² 05 Colours
 - OD³ 01 Colours
 - OD⁴ 00 Colours
- } 8 Colours



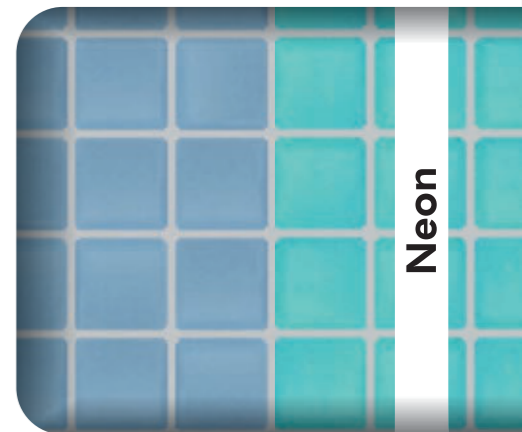
Oxido

Neon

Glow effect

Neon is available in 2.5 x 2.5 | 5.0 x 5.0 cm; 2.5 x 5.0 cm, and 2.5 | 5.0 cm Hexa formats consisting of :-

- NE¹ 06 Colours
 - NE² 00 Colours
 - NE³ 00 Colours
 - NE⁴ 00 Colours
- } 06 Colours



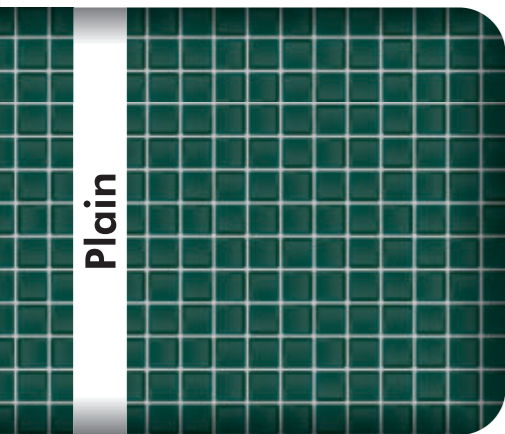
Neon

Day view

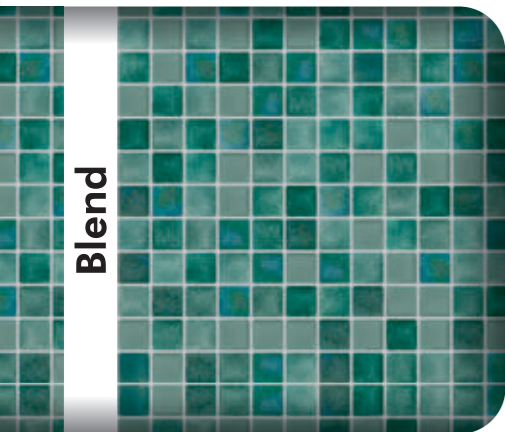
Night view

Freedom of Design

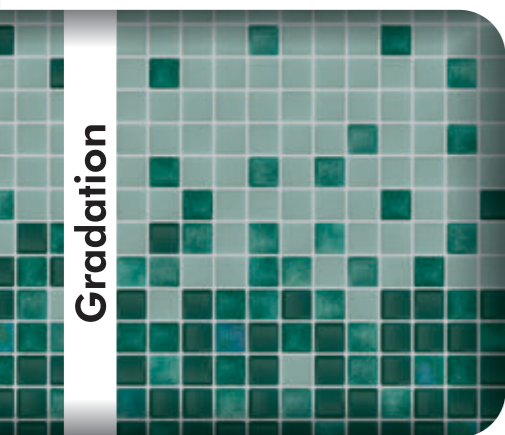
Items



Plain
A single colour having one look used in a sheet. In other words, assembling of "one colour" having "one look" mosaic on a sheet in a particular "technique" in the desired "size/s" and "pattern".



Blend
Two or more colours/looks mixed together in a desired % and placed randomly on a sheet. In other words, assembling of "two or more colours/looks" mosaic randomly placed on a sheet in a particular "technique" in the desired "% of colours", "size/s" and "pattern".



Gradation
A series of colours placed in a gradual transition form giving an effect of light to dark (LD) / dark to light (DL) / light-dark-light (LDL) / dark-light-dark (DLD). In other words, assembling of "required colours/looks" of mosaic randomly placed on a sheet in a particular "technique" in the desired "size/s" and "pattern" in such a way that reflects a gradual transition from one colour hue to another. In certain transition the hue colour gradient can take you to altogether a new colour hue.

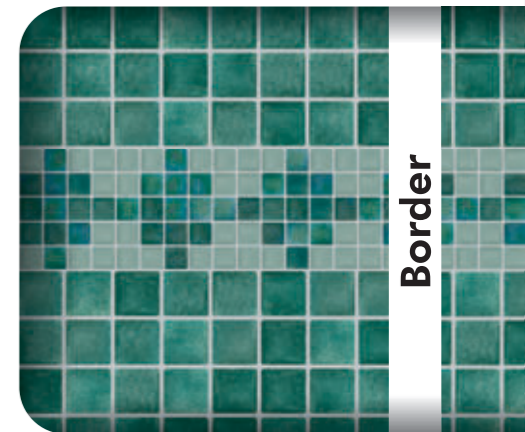
Decoration

A design made up of repeating the modules in all four directions. In other words, assembling of "required colours/looks" of mosaic specifically placed on a sheet in a particular "technique" in the desired "size/s" and "pattern" to create a module (a unit of one/more sheets), where a module can be repeated in all the four directions without hampering the design.



Border

A design made up of small module which can be repeated in "horizontal" as well as "vertical" direction. In other words, assembling of "required colours/looks" of mosaic specifically placed on a sheet in a particular "technique" in the desired "size/s" and "pattern" to create a module (less than a sheet), where a module can be repeated linearly on any side.



Mural

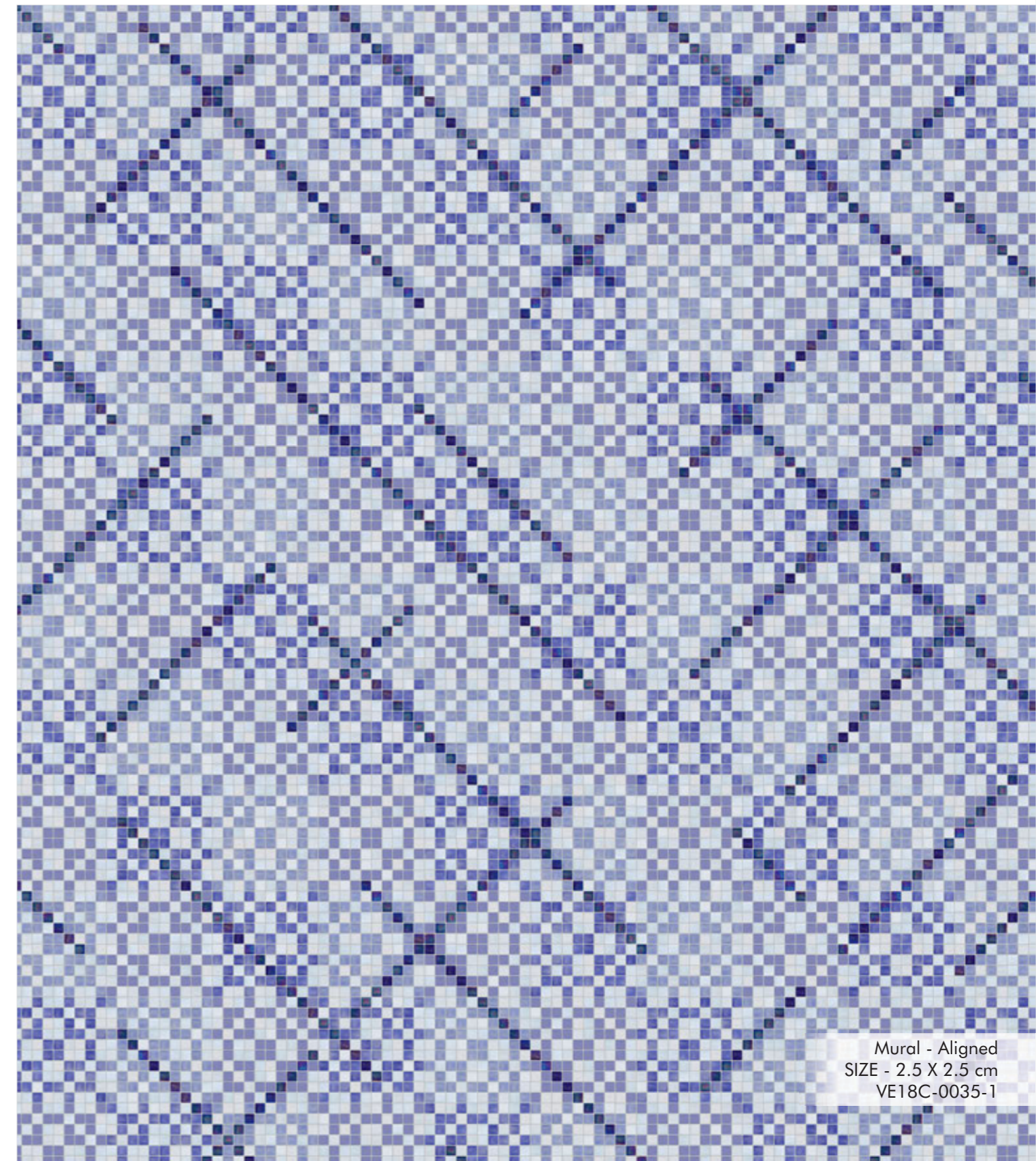
A piece of artwork to create a desired picturesque effect. In other words, artwork created by assembling of "required colours/looks" of mosaic specifically placed on a sheet in a particular "technique" in the desired "size/s" and "pattern" to give a picturesque effect.



Creativity & Customisation

Design Elaboration

“Design” is the reflection of one’s imagination. VENETO takes you to the world of creativity through freedom of customisation by providing exclusive design solutions.



Mural - Aligned
SIZE - 2.5 X 2.5 cm
VE18C-0035-1

Manufactured as per
International Standards

Why Mosaic

IMPERVIOUS



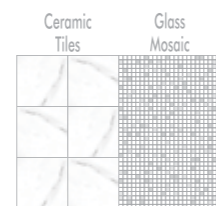
Nil
Water absorption

DESIGN
CUSTOMISATION



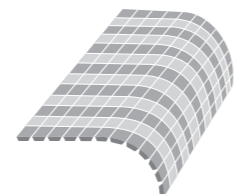
Techniques
Sizes
Looks
Colours

SEAMLESS
EFFECT



Mosaic application
creates seamless effect

ADAPTABILITY



Easy to fix on
curved surfaces

Bungalow - Bathroom - Floor
Plain - Classic - 5 cm Hexa
VE17-0015-1

Test Data

"VENETO" recycled mosaic is manufactured using post consumer glass through Sintered Technology and meets the specifications as per International Standards applicable for "Mounted Mosaic". As per ANSI A137.2 mosaic having facial surface area $\leq 57.76 \text{ cm}^2$ and such that the longest side is not greater than 4.25 times the shortest side, fall under the category of "Mosaics". The Technical data sheet is given below :-

TECHNICAL CHARACTERISTICS & TEST DATA			
	WATER ABSORPTION	ISO 10545-3 / ASTM C373	None
	RESISTANCE TO THERMAL SHOCKS	ISO 10545-9 / ASTM C484	Resistant
	RESISTANCE TO FROST	ISO 10545-12 / ASTM C1026	Resistant
	RESISTANCE TO CHEMICAL ATTACK	ISO 10545-13 / ASTM C650	Resistant
	RESISTANCE TO STAIN	ISO 10545-14 / ASTM C1378	Resistant
	LIGHT AND COLOUR FASTNESS	DIN 51094 / SS 301	Passes

- Mosaic colours shown here are purely indicative, tonal variation is an inherent characteristics of any fired product.
- Size variation & irregular edges are inherent characteristics of recycled mosaics. These characteristics can affect the grout joint appearance and enhance the natural aura of the product.
- "Neon" look mosaics after exposure to natural/artificial lights for sometime gives photoluminescent effect which is visible in complete darkness. After few minutes the glow of this mosaic begins to decay, the effect gets reduced by 90% within an hour, which remains visible for next 6-7 hours.

VENETO USP

RECYCLED
MOSAIC



100%
Made with Recycled glass

2 MODULAR SIZES



2.5 x 5 cm
5 x 5 cm

Possible to mix & merge sizes, items and techniques retaining alignment.

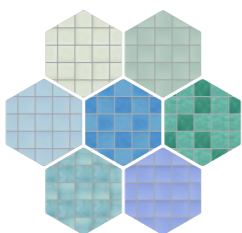
TECHNIQUES



Aligned, Classic,
Modular

Infinite pattern possibilities.

LOOKS



7 looks

Enriches design feel.

Differentiation with the purpose

WIDE
COLOUR RANGE



80+
colours

Enhances design aesthetics.

OPTIONS



400+
to explore
5 sizes
7 looks
80+ colours

INNOVATIVE
ASSEMBLING



State-of-the-art
Polyurethane link assembling
through Robot



Hotel - Pool - Floor / Wall
Blend - Aligned - 5 X 5 cm
VE18D-0008-1

Limited by
our Imagination

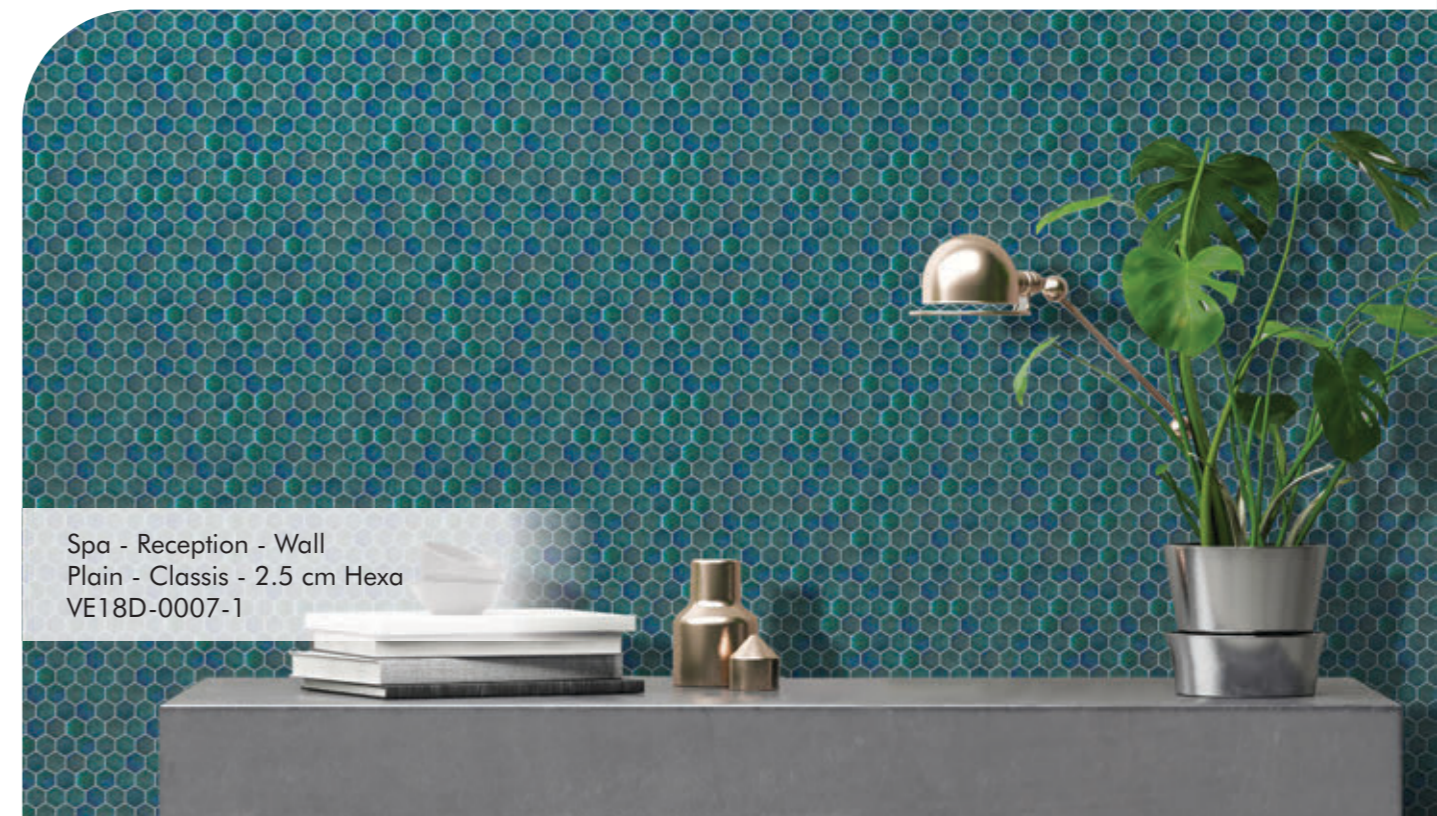
Applications

Sector - Places (e.g. Religious - Church)

VENETO recycled mosaic is suitable for "interior" as well as "exterior" applications.

These applications can be in any "Sector" at many "places", be it private or public, as listed below :-

- Commercial
 - Manufacturing Plant
 - Office
 - Show Room
 - Warehouse
- Educational
 - College
 - Institute
 - School
- Entertainment
 - Gym
 - Multiplex
 - Spa
 - Theme Park
 - Water Park
- Government
 - Courts
 - Corporates
 - Defence
 - Post Offices
 - RTOs
- Hospitality
 - Club
 - Hotel
 - Resort
 - Restaurant
- Medical
 - Clinic
 - Hospital
- Public Place
 - Airport
 - Bus Station
 - Metro Station
 - Port
 - Railway Station
 - Shopping Mall
- Religious
 - Church
 - Gurudwara
 - Mosque
 - Temple
- Residential
 - Apartment
 - Bungalow



Spa - Reception - Wall
Plain - Classis - 2.5 cm Hexa
VE18D-0007-1



Bungalow - Bath - Wall
 Decoration - Modular - Multi Size
 VE18D-0005-1

Areas

VENETO recycled mosaic beautifies the ambience of different “areas” in any of the above places. Even a tinge of mosaic applied strategically in the following areas can enhance the beauty of the surroundings dramatically :-

- Balcony
- Banquet
- Bathroom
- Bedroom
- Boundary Wall
- Chamber
- Conference
- Dining
- Discotheque
- Display
- Facade / Elevation
- Fountain
- Jacuzzi / Sauna / Steam
- Kitchen
- Lift Area
- Living Room
- Lobby
- Lounge / Waiting Area
- Pantry
- Pooja Room
- Porch
- Reception
- Shower Area
- Staircase
- Swimming Pool
- Swimming Pool Deck
- Terrace
- Wash Area
- Water Feature



Bungalow - Bath - Wall
 Decoration - Classic - 2.5 X 5 cm
 VE18D-0006-1

Surfaces

VENETO Recycled mosaic, being small in size, can be installed on curved surfaces as well. Some of the common “surfaces” where VENETO can be applied are listed below :-

PRODUCT	WALLS		CURVATURES			DECORATIVES			SUBMERGED		FLOORS			FLOOR USAGE LEVEL (*)				
	Interior	Exterior	Ceiling	Dome	Pillar	Frame	Object	Panel	Pool	Water Feature	Interior - Dry	Interior - Wet	Exterior	Light Residential	Residential	Heavy Residential	Light Commercial	Heavy Commercial
RECYCLED MOSAIC																		
STEAM	•	•		•	•	•	•	•	•	•	•	•		•				
GEMS	•	•		•	•	•	•	•	•	•	•	•		•				
CANDY	•	•		•	•	•	•	•	•	•	•	•		•				
BRAKE	•	•		•	•	•	•	•	•	•	•	•		•				
JAZZY	•	•		•	•	•	•	•	•	•	•	•		•				
OXIDO	•	•		•	•	•	•	•	•	•	•	•		•				
NEON	•	•		•	•	•	•	•	•	•	•	•		•				

(*)

- Light Residential: Floor coverings in areas that are walked on essentially with soft soled footwear or bare feet without scratching dirt. (e.g. Residential Bathrooms & Bedrooms without direct access from outside)
- Residential: Floor coverings in areas that are walked on by soft soled or normal footwear with at the most occasional small amounts of scratching dirt. (e.g. Rooms in the living areas of homes but with the exception of Kitchens, Entrances and other rooms which may have a lot of traffic)
- Heavy Residential: Floor coverings in areas that are walked on with normal footwear more often with small amounts of scratching dirt. (e.g. Residential Kitchens, Halls, Corridors, Balconies, Loggias and Terraces)
- Light Commercial: Floor coverings in areas that are walked on by regular traffic with some scratching dirt. (e.g. Entrances, Commercial Kitchens, Hotel, Exhibition and Sale Rooms)
- Heavy Commercial: Floor coverings in areas that are subject to severe pedestrian traffic over sustained periods with some scratching dirt. (e.g. Public areas such as Shopping malls, Airport concourses, Hotel Foyers, Public Walkways and Industrial Applications)

International Presence

Global Footprints
in more than **50 Countries.**

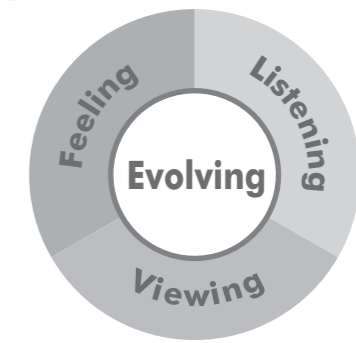


National Presence

Over **1000** Dealers across the **Country.**



Discovering our Future Inspired by our Past



Learning Curve

“Listening”, “Viewing” and “Feeling” are stimulators which help us to evolve all our activities. Coordination of these senses guides us to achieve the creative excellence, which is continuously evolving to challenge and push the limits of our excellence.

Continuous enhancement into the field of mosaics through creative learning has always been an important activity .

We stand committed through intention and involvement for creating excellence through technology and team to foster the best products and services for customers’ delight.

To keep up the pace of learning curve, We work closely with many architects, creative designers and channel partners across the world. This allows a 365-days learning in motion, which empowers us to excel in the field of mosaic and the learning continues.....



Contact

For any enquiry, please contact :-

Piccolo Mosaic Limited

▲ Corporate Office :

4th Floor, Samaan II, Anand Nagar,
Ahmedabad - 380 015,
Gujarat, INDIA.

Board : +91 79 4000 6000
Fax : +91 79 4000 6200
e-mail : veneto@italiagroup.in
URL : www.venetomosaic.in
www.italiagroup.in

■ Manufacturing Plant :

Plot No. 36, Ganeshpura Kaiyal Road,
Vlg.- Kaiyal - 382 705, Tal.- Kadi,
Dist.- Mehsana, Gujarat, INDIA.

* Regional offices :

- **Bengaluru Office :**
S-717, South Block, Manipal Centre,
#47, Dickenson Road,
Bengaluru - 560 042, Karnataka.
e-mail : pml.bengaluru@italiagroup.in
- **Chennai Office :**
Suite No-124, 1st Floor, DBS Business Centre,
31A, Cathedral Garden Road, Nungambakkam,
Chennai - 600 034, Tamil Nadu.
e-mail : pml.chennai@italiagroup.in
- **Delhi Office :**
1312-B, 13th Floor, Devika Tower,
Nehru Palace,
New Delhi - 110 048, Delhi.
e-mail : pml.delhi@italiagroup.in
- **Hyderabad Office :**
Flat No. 101, IRIS Apartments,
Sangeet Nagar,
Hyderabad - 500 082, Telangana.
e-mail : pml.hyderabad@italiagroup.in
- **Kolkata Office :**
410, 4th Floor Arcadia Centre, Premise - 31,
Opp. Vishwakarma Building, Dr. Ambedkar Sarani,
Kolkata - 700 046, West Bengal.
e-mail : pml.kolkata@italiagroup.in
- **Mumbai Office :**
B/303 Jyoti Plaza,
Opp. Anandvan ashram, S. V road,
Kandivali (West), Mumbai - 400067, Maharashtra.
e-mail : pml.mumbai@italiagroup.in
- **Pune Office :**
Building - B/10, Sukhwani Park.
Near Axis Bank, North Main Road.
Koregaon Park, Pune - 411001
Office Landline No- (020) 66203361
e-mail : pml.pune@italiagroup.in



PDVer - 18.1.1

copyright ©
Piccolo Mosaic Ltd.

Colours of actual mosaic
in digital or printing looks
different, so the product shades
as represented here are
intended for reference only.

All rights reserved.
Reproduction of any part
of this presentation / book
in print / digital medium
is not permitted without
written permission
from Piccolo Mosaic Ltd.

VENETO[®]

 MOSAIC

Piccolo Mosaic Limited

Corporate Office :

4th Floor, Samaan II, Anand Nagar, Ahmedabad - 380 015, Gujarat, INDIA.
Board: +91 79 4000 6000 | Fax: +91 79 4000 6200 | e-mail: veneto@italiagroup.in | URL: www.venetomosaic.in, www.italiagroup.in

Manufacturing Plant :

Plot No. 36, Ganeshpura Kaiyal Road, Vlg.- Kaiyal - 382 705, Tal.- Kadi, Dist.- Mehsana, Gujarat, INDIA.